



Release Notes

Leaf Capture Software

Version 11.2.7 for Leaf AFi-II 10 and Aptus-II 10

Copyright

© Kodak 2009. All rights reserved. Kodak, Leaf, the Leaf logo, and Aptus are trademarks of Kodak.

This document is also distributed in Adobe Systems Incorporated's PDF (Portable Document Format). You may reproduce the document from the PDF file for internal use. Copies produced from the PDF file must be reproduced in whole.

Trademarks

Kodak and Leaf are trademarks of Kodak.

Adobe, Acrobat, Adobe Illustrator, Distiller, Photoshop, PostScript, and PageMaker are trademarks of Adobe Systems Incorporated.

Apple, iMac, Power Macintosh, Mac OS, AppleShare, AppleTalk, TrueType, ImageWriter, and LaserWriter are registered trademarks of Apple Computer, Inc. Macintosh is a trademark of Apple Computer, Inc., registered in the U.S.A. and other countries.

FCC Compliance

Any Kodak equipment referred to in this document complies with the requirements in part 15 of the FCC Rules for a Class A digital device. Operation of the Kodak equipment in a residential area may cause unacceptable interference to radio and TV reception, requiring the operator to take whatever steps are necessary to correct the interference.

Equipment Recycling



In the European Union, this symbol indicates that when the last user wishes to discard this product, it must be sent to appropriate facilities for recovery and recycling.

Contact your local Kodak representative or refer to <http://www.kodak.com/go/recycle> for additional information on the collection and recovery programs available for this product.

Limitation of Liability

The product, software or services are being provided on an "as is" and "as available" basis. Except as may be stated specifically in your contract, Kodak expressly disclaims all warranties of any kind, whether express or implied, including, but not limited to, any implied warranties of merchantability, fitness for a particular purpose and non-infringement.

You understand and agree that, except as may be stated specifically in your contract, Kodak shall not be liable for any direct, indirect, incidental, special, consequential or exemplary damages, including but not limited to, damages for loss of profits, goodwill, use, data or other intangible losses (even if Kodak has been advised of the possibility of such damages), resulting from: (i) the use or the inability to use the product or software; (ii) the cost of procurement of substitute goods and services resulting from any products, goods, data, software, information or services purchased; (iii) unauthorized access to or alteration of your products, software or data; (iv) statements or conduct of any third party; (v) any other matter relating to the product, software, or services.

The text and drawings herein are for illustration and reference only. The specifications on which they are based are subject to change. Kodak may, at any time and without notice, make changes to this document. Kodak assumes no liability for technical or editorial errors or omissions made herein, and shall not be liable for incidental, consequential, indirect, or special damages, including, without limitation, loss of use, loss or alteration of data, delays, or lost profits or savings arising from the use of this document.

<http://www.leaf-photography.com>

Internal 739-00555A-EN
Revised 18 May 2009

Contents

Introduction	1
New Features	1
Uploading Firmware to Leaf AFi-II Camera Systems	3
Minimum System Requirements.....	4
Leaf Product Compatibility.....	4
About Leaf Capture Installation	4
General Leaf Tips	6
Known Issues	8

Introduction

Leaf® Capture is an image capture and processing workflow software that has been designed for you to make the most of the images you take with your Leaf products, and to improve your productivity.

The intuitive Leaf Capture user interface guides you through the image capture workflow. Since you can use it to check and perfect your images while you shoot, Leaf Capture serves as the ideal match for high-volume productions on tight deadlines, such as catalog and fashion shoots. Leaf Capture enables you to produce outstanding quality images with fine details and accurate colors. Since the software is focused on professional photographic requirements, it supports editing and managing of files in both tethered and portable shooting modes.

Key Features

Enhanced Mos2Mos Processing

Processing to apply lens calibration to your images is now much quicker.

ISO 80 Now Available

The Leaf AFi-II 10 and Aptus-II 10 imaging modules contain a new, high performance sensor which has enabled Leaf to achieve better dynamic range, and enables you to shoot with an ISO of 80. The ISO range now available is 80-800 ISO.

Lens Calibration

The new lens calibration function offers significant improvements in image quality for photographers using new Leaf AFi-II 10 and Leaf Aptus-II 10 backs. You can create lens calibration files for any lens to optimize the performance of the lens with the Leaf sensor. Lens calibration files are reference files that 'describe' certain characteristics of the lens so that you can obtain the best quality available from your imaging module.

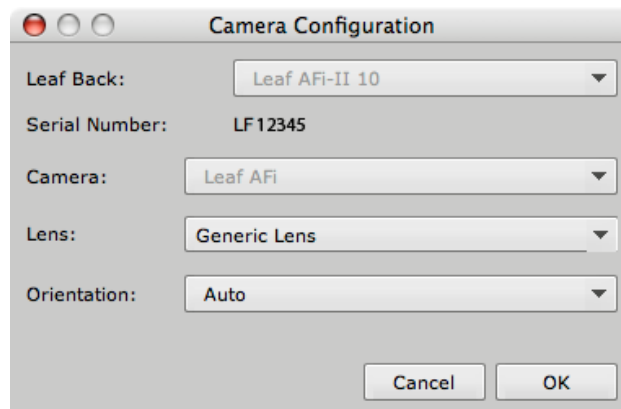
In an effort to simplify the process, each new Aptus-II 10 and AFi-II 10 is now shipped with an additional installation CD containing factory defined lens calibration files for some of the most commonly used lenses. These files are customized and tested for each sensor individually. Customers can still use Leaf Capture v11.2.7 to create additional customized lens calibration files as needed. These files reside in the Leaf Tables/Lens Calibration folder.

For more information on using lens calibration files, refer to the Lens Calibration Guide for Leaf AFi-II 10 and Aptus-II 10 Camera Backs (p/n 731-01750A-EN, on http://www.leaf-photography.com/imgs/uploads/technical%20bulletins/Lens_Calibration_Guide_for_Leaf_AFi-II_10_and_Aptus-II_10.pdf).

Please note that the currently available version of Leaf RAW Converter does not support RAW files captured with a Leaf Aptus-II 10 or Leaf AFi-II 10 in which lens calibration optimization has been implemented. If you wish to use one of the many third party image editor or workflow management packages that support Leaf files, Leaf Capture can still be used to batch convert these images for external processing if desired.

Working with Lens Calibration Files

In the Camera Configuration dialog box, you can now select the lens calibration file that you wish to apply to your shots. This could be a custom made calibration file, or the appropriate lens calibration file from the Lens Calibration Data CD.



Use the reference table in the Lens Calibration Guide for Leaf AFi-II 10 and Aptus-II 10 Camera Backs (p/n 731-01750A-EN, on http://www.leaf-photography.com/imgs/uploads/technical%20bulletins/Lens_Calibration_Guide_for_Leaf_AFi-II_10_and_Aptus-II_10.pdf), to determine the correct lens calibration file for the lens you are using.

Enhanced Color Look (ICC Input Profiles)

This version contains enhanced color look profiles.

Uploading Firmware to Leaf AFi Camera Systems

When connecting a Leaf AFi camera system to Leaf Capture v11.2.7 for the first time, follow this procedure to ensure that the new firmware will be loaded to the camera system:

1. Launch the Leaf Capture software.
2. Connect your imaging module to the computer.

The firmware is uploaded. When complete, if your camera system was turned off, a message appears prompting you to turn on the camera system.

3. Turn on the camera system and press the shutter release button lightly until you encounter resistance.

Important: The v2.13 firmware is compatible with Leaf Capture versions 11.2.3 and higher. After connecting and upgrading to the new firmware, you cannot work with Leaf Capture versions 11.2.0.2 and earlier.

Should you need to roll back to v11.2.0.2 or earlier, you need to start the camera in boot mode and reinstall the earlier firmware using Leaf Capture v11.2.0.2. For a detailed description of the procedure, refer to the *Firmware update was unsuccessful* section in the *Troubleshooting* chapter of your Leaf AFi-II User Guide.

Minimum System Requirements

The following system components are required for running the Leaf Capture software:

	PowerPC-based Macintosh	Intel-based Macintosh
Processor	Dual Core/Processor G5	Intel® Core™ Duo or Xeon®
Processor speed	1.8 GHz	1.83 GHz
Memory	2 GB	2 GB
Operating system	Mac OS X, version 10.5	Mac OS X, version 10.5

Leaf Product Compatibility

This version of the Leaf Capture software supports Leaf AFi-II 10 camera systems and Aptus-II 10 imaging modules.

About Leaf Capture Installation

Installing Leaf Capture

The Leaf Capture installation wizard requires that no other applications are running during the installation. If you are working in other applications, make sure you save your work before launching the Leaf Capture installation.

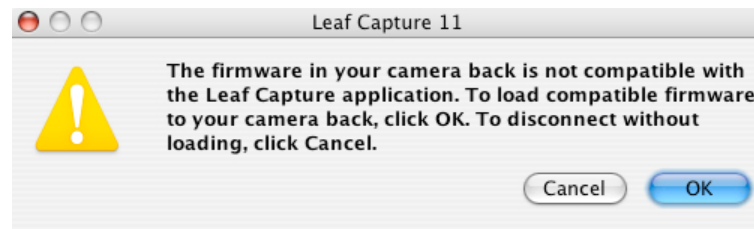
If your Leaf product came with a second installation CD (Lens Calibration Data), after finishing installing Leaf Capture version 11.2.7, you should insert the Lens Calibration Data CD and install it too. This installation workflow should be followed every time you install Leaf Capture version 11.2.7 on computers that you work with.

Computer Restarts After Installation

If a driver that is new to your computer is installed during the Leaf Capture version 11.2.7 software installation, Leaf Capture restarts your computer at the end of the installation. If you are working in other applications, make sure you save your work first.

Updating the Imaging Module Firmware

When you connect your imaging module to the Leaf Capture software, the following message appears:



- Click **OK**. The imaging module firmware is updated. This process takes approximately 10 minutes.

After uploading the firmware, turn the imaging module off and on again.

Preferences are Reset After Installation

The installation automatically resets your Leaf Capture preferences.

Note: If you have multiple user accounts, the preferences are reset only for the user who installs the Leaf Capture software. All other users must manually reset their preferences:

- Locate **Applications > Leaf Capture 11 > Utilities**, and double-click **Reset Preferences**.

General Leaf Tips

Opening Images in Third Party Applications

To open images taken in portable mode in third party applications, you must first apply lens calibration to your images.

Refer to the “When you are Shooting Portable” section in the [Lens Calibration Guide for Leaf AFi-II 10 and Aptus-II 10 Camera Backs Technical Bulletin](#).


There are three stages to your workflow:


1. Define your lens and make the correct settings in your camera back before taking your shots.
2. After downloading your shots, follow the “Applying Lens Calibration to an Image in Leaf Capture” workflow in the technical bulletin.
3. Open the files in the third party application.

Using your CF Card in Multiple Imaging Modules

When using a CF card in multiple imaging modules, it is recommended that you perform a quick format each time you switch the card between imaging modules.

Switching Between Shooting Modes

 When switching from portable to tethered mode, wait for the CF card icon to stop running before connecting the FireWire cable to your computer.

When tethered, eject the CF card via the Apple® Macintosh® desktop, and disconnect the FireWire cable only when the connect icon  is green.

Using a Second Battery with Your Leaf AFi/AFi-II Imaging Module

If you are using a second battery on the Leaf AFi or AFi-II imaging module, you must manually switch off the imaging module in the following circumstances:

When you shut down the Leaf AFi or AFi-II camera system

When the camera system enters power save mode

Conserving Battery Power

Working in mirror-up mode can consume a lot of battery power. To conserve your batteries, minimize the time you work in mirror-up mode.

Locating the Leaf Tables

The Leaf tables are located under **Leaf Images > Leaf Tables** in the **Pictures** folder of each user.

Firmware Files Change in Location

The firmware files are now located in the application package.


Undoing Unsaved Changes

To undo unsaved changes to image settings, select **In File** in the predefined settings list.

Applying the Settings of One File to Another File

To find out how to apply a file's settings to another file, see Leaf Technical Bulletin #2, *How to adjust multiple images*, available at: <http://www.leaf-photography.com/support/techbulletin>.

Removing a CompactFlash Card From a Leaf Imaging Module In Tethered Mode, Connected to a Macintosh Computer

To remove the CF card from the Leaf imaging module, click **Disconnect**  in the Leaf Capture software, and eject the CF card via the Apple Macintosh desktop.

Removing the CompactFlash® (CF) memory card from the Leaf imaging module while shooting in tethered mode stops the communication.

In Portable Mode



Before you remove the CF card from the imaging module, make sure that the CF card icon is not showing.

Shooting While the Imaging Module Is Busy



Wait until the busy symbol disappears before shooting.

Working with Seamless Switch

When disconnecting the FireWire cable in tethered mode while a CF card is inserted in the imaging module, a message appears in the Leaf Capture software. Click **OK** before reconnecting the cable.

Fixed Issues

This section lists problems that were fixed in this version of the Leaf Capture software.

Burst Speed

The burst speed for short exposure shots with AFi-II 10 camera systems is now 1 frame per second.

Known Issues

This section lists known problems in the Leaf Capture software and imaging module. They may be outstanding issues from a previous release, or new problems. When a problem listed here is resolved, the solution is described in the *Fixed Issues* section of the release notes for the next version of the Leaf Capture software.

Leaf Capture Software Issues

Predefined Settings List

After adjusting and saving an image, then adding multiple images and applying the change to the selection, the active setting is lost from the predefined settings list if you remove any image from the selection.

Workaround: Save the images after applying the change.

Gray Balance Picker in Live View

In live view, after you click using the gray balance picker tool, the cursor changes from the picker to the regular mouse pointer. However, if you continue to click the live view display, the gray balance is updated according to the spot you clicked.

Workaround: After using the gray balance picker to achieve a gray balance you are happy with, choose another tool to disable the gray balance picker.

Moving a Moiré Reduction Selection over the Display

When moving a moiré reduction selection over the zoomed-in image in the display, mouse-control of the selection is lost when you reach the edge. Click the selection again to regain control.

Dragging and Dropping after Processing

You cannot drag and drop files to a different partition after processing.

Workaround: In the **Edit** menu, select **Copy to Folder** or **Move to Folder** to copy or move your files.

File Names Including Forward Slash Character

When processing images with the forward slash “/” character in the file name, the Leaf Capture software stops responding. Do not use this character in file names.

Misleading Message After Reconnecting After Shooting with a Custom Lens Calibration File

When you disconnect the imaging module from the Leaf Capture software by way of clicking disconnect or closing Leaf Capture, but not physically disconnecting the FireWire cable, the custom lens calibration file is still loaded in the imaging module.

Upon reconnection, the imaging module searches for the custom lens calibration file on your computer. If you changed the location or name of the custom lens calibration file, a message appears warning you that it cannot locate the custom lens calibration file, and that it will use the default lens calibration file.

However, for as long as the imaging module is not physically disconnected, it retains the custom lens calibration file in its memory, and continues to use the custom lens calibration file until you load a new file, or until you physically disconnect the imaging module by removing the FireWire cable.

Workaround: If you want to use the default lens calibration file, either disconnect and reconnect by physically removing and replacing the FireWire cable, or reload the default lens calibration file.

Moving Folders in the Browse Tree

After you move folders in the **Browse** panel directory area, the contents of the moved folder are not displayed.

Workaround: To view the folder’s contents, select another folder and then select the folder that you are working on.

Proofing Output Color at a Magnification Greater Than 70%

If you select a CMYK print space or a limited gamut RGB working space on the **Process** panel’s **Color** tab, the correct color is displayed in the Detail pane or in the Preview area only when the image is magnified at a level greater than 70%.

Workaround: To proof output color, view the image in the Detail pane or Preview area at a magnification level greater than 70%.

Help System

At this time, the help system is available only in English.

Leaf AFi Camera System Issues

Limitations with Cable Release

Cable release has the following limitations:

You cannot use cable when the camera system is set to B or T modes.

When pressing the cable release button in single mode, the camera shoots continually. For one shot, press once.

You cannot activate the self-timer using the cable release.

Shooting Using the AFi-II 10 Imaging Module with Mamiya RZ Camera

When shooting continuously without waiting for the ready beep, and with no defined orientation, in some cases the images are taken with incorrect orientation.

Workaround: In portable mode, set the orientation of your shot to in the camera settings menu in Camera view:

Tap Orientation.

Tap an orientation.

Tap **ok**.

In tethered mode, select an orientation in the camera settings in Leaf Capture.